

APPLICATIONS

LIFTING ATTACHMENT POINTS

B-Alloy Weld-On Lifting and Lashing Rings provide a safe and permanent connection to the load and are the ideal solution for applications where screw type rings cannot be used.

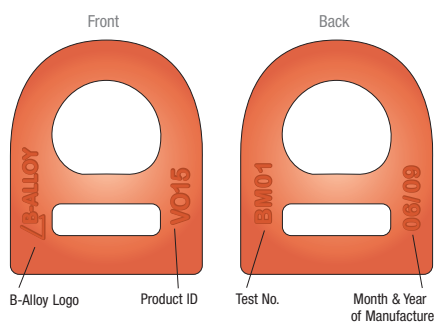
Just some of the many applications for this innovative product include mining, off-shore exploration, road or rail transport and maritime associated industries. Complies to AS3776.

FEATURES

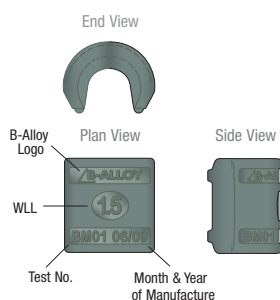
- Manufactured using Grade 100 Quality Alloy Steel, quenched and tempered
- Offers a full working load limit (W.L.L) at all angles
- Extremely high strength attachment as a lifting and lashing point
- Lifting ring and welding block are both marked with BV100, Month and Year (MM/YY). Only the welding block is marked with the W.L.L.
- Easily welded into required position with the aid of height lugs on the weld block
- Functional compact design
- Lifting ring has durable powder coated baked enamel finish
- Test Certificate available
- Weld instruction details supplied with each unit

MODEL TYPE: BALPV

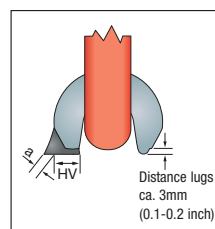
Available in W.L.L (working load limit) 1.5, 2.5, 4, 6.7, 10 & 16 tonne capacities



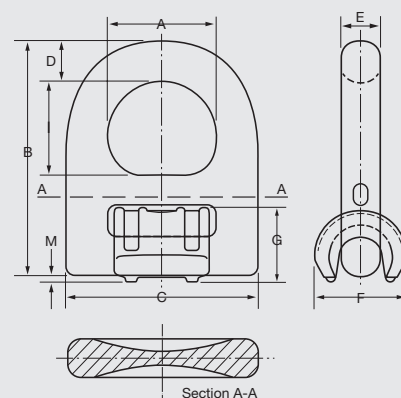
Lifting Ring raised markings



Weld Block raised markings



Welding seam attachment example



Product Code	W.L.L t	A mm	B mm	C mm	D mm	E mm	F mm	G mm	I mm	M mm	Weld mm HV+aL	Weight kg
BALPV015	1.5	38	79	66	14	13.5	32	25	31	2	HV5+3	0.40
BALPV025	2.5	45	92.5	77	16	13.5	36	27	37	3.5	HV7+3	0.60
BALPV040	4	51	102	87	18	16.5	42	32	40.5	2	HV8+3	0.90
BALPV067	6.7	67	138	115	24	22.5	61	44	55	4	HV12+4	2.0
BALPV100	10	67.5	142	129	26.5	57.5	75	53	57.5	4	HV16+4	3.0
BALPV160	16	100	216.4	190	40	26	95	69	85	5	HV25+6	6.9